

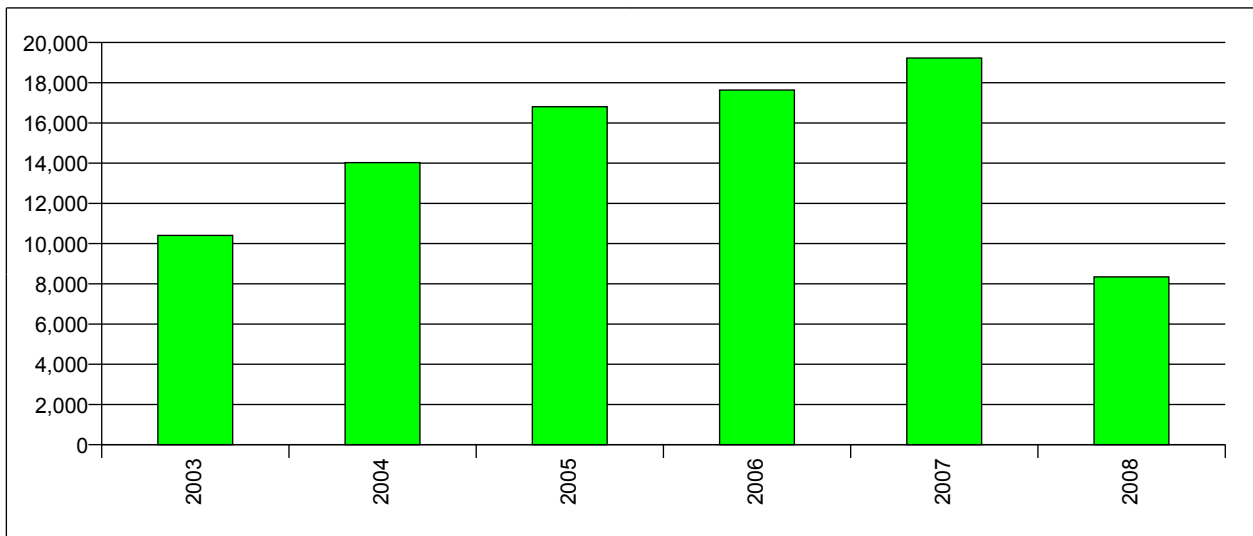


SSC007 - Statistics of Community Designs 2008

Hasta / Bis / Until / Jusqu'à / Fino : 31/05/2008

04/06/2008

Solicitudes Anmeldungen Applications Dépôts Domande	2003-2007	%	2008	%	Total Insgesamt Total Total Totale	%
Simple / Einzelanmeldungen / Single / Simple / Singole	38,124	49	3,979	48	42,103	49
Múltiple / Sammelanmeldungen / Multiple / Multiple / Multiple	39,985	51	4,367	52	44,352	51
Total / Insgesamt / Total / Total / Totale	78,109	100	8,346	100	86,455	100



Promedio de dibujos-modelos por solicitud Durschnitt der Muster pro Anmeldung Average of designs per application Moyenne de dessins et modèles par dépôt Media disegni e modelli per domanda	2003-2007	2008	Total Insgesamt Total Total Totale
Simple / Einzelanmeldungen / Single / Simple / Singole	1.00	1.00	1.00
Múltiple / Sammelanmeldungen / Multiple / Multiple / Multiple	6.68	6.99	6.71
Total / Insgesamt / Total / Total / Totale	3.91	4.14	3.93



SSC007 - Statistics of Community Designs 2008

Hasta / Bis / Until / Jusqu'à / Fino : 31/05/2008

04/06/2008

Situación DMC

Situation GGM

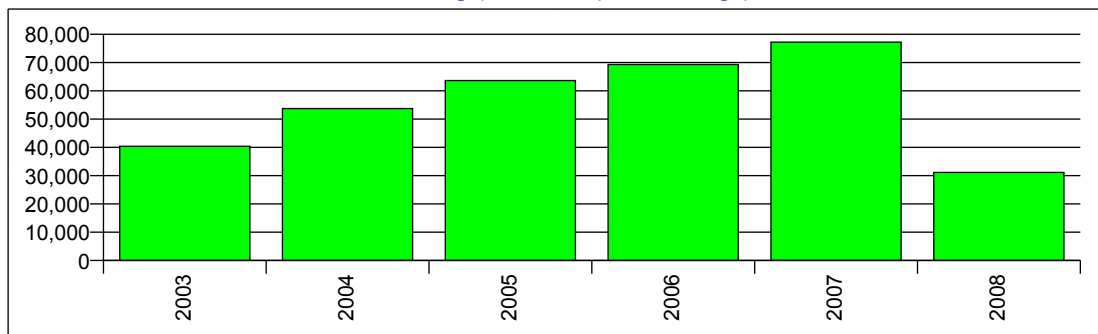
RCDs situation

Situation DMC

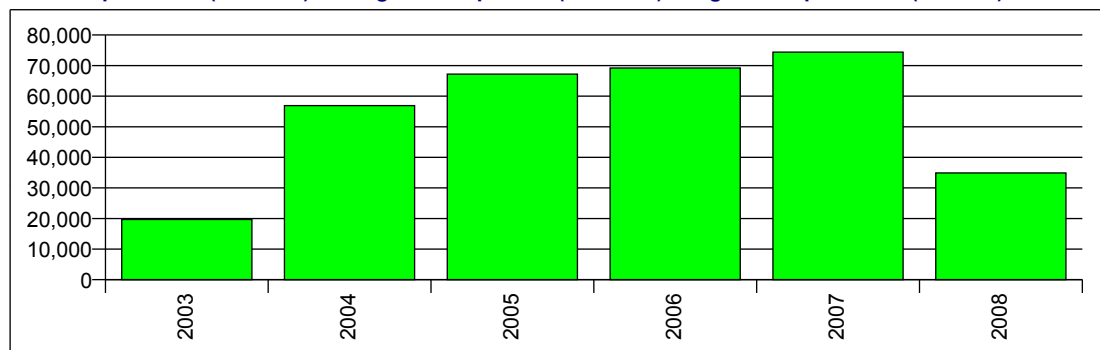
Situazione DMC

DMC - GGM - RCD - DMC - DMC	2003 - 2007	2008	Total - Ingesamt - Total - Totale
(0) Recibidos (creados en Eurodesign) / Eingang (in Eurodesign) / Reception (in Eurodesign) / Reçus (dans Eurodesign) / Ricevuti (in Eurodesign)	304,336	31,146	335,482
(13) Rechazados / Zurückgewiesen / Refused / Réfusés / Rifiutati	1,790	286	2,076
(6) Registrados y publicados (A1 o A2) / Eingetragen und veröffentlicht (A1 oder A2) / Registered and published (A1 or A2) / Enregistrés et publiés (A1 ou A2) / Registrati e pubblicati (A1 o A2)	287,425	34,883	322,308
(7) Retirados / Zurückgenommen / Withdrawn / Retirés / Ritirati	1,970	328	2,298
(9) No tramitados como DMC / Nicht als Anmeldung eines GGM behandelt/ Not a CD / Pas traités en tant que DMC / Non trattata come domanda DMC	178	48	226

Recibidos (creados en Eurodesign) / Eingang (in Eurodesign) / Reception (in Eurodesign) / Reçus (dans Eurodesign) / Ricevuti (in Eurodesign)



Registrados y publicados (A1 o A2) / Eingetragen und veröffentlicht (A1 oder A2) / Registered and published (A1 or A2) / Enregistrés et publiés (A1 ou A2) / Registrati e pubblicati (A1 o A2)





SSC007 - Statistics of Community Designs 2008

Hasta / Bis / Until / Jusqu'à / Fino : 31/05/2008

Desglose por países/territorios - Aufschlüsselung Nach Länder/Territorien - Breakdown per country/territory

Ventilation par pays/territoires - Ripartizione per paese/paesi

04/06/2008

Union europea - Euroäische union - European union - Union européenne - Unione europea

Origen	Herkunft	Origin	Origine	Origine	2003 - 2007	% UE EU UE UE	% Mundo Welt World Monde Mondo	2008	% UE EU UE UE	% Mundo Welt World Monde Mondo	Total Ingesamt Total Total Totale	% UE EU UE UE	% Mundo Welt World Monde Mondo
(AT) AUSTRIA					7,641	3.22	2.51	745	3.06	2.39	8,386	3.20	2.50
(BE) BELGIUM					5,563	2.34	1.83	441	1.81	1.42	6,004	2.29	1.79
(BG) BULGARIA					179	0.08	0.06	43	0.18	0.14	222	0.08	0.07
(CY) CYPRUS					102	0.04	0.03				102	0.04	0.03
(CZ) CZECH REPUBLIC					1,745	0.74	0.57	209	0.86	0.67	1,954	0.75	0.58
(DE) GERMANY					72,919	30.73	23.95	8,033	32.99	25.79	80,952	30.94	24.12
(DK) DENMARK					6,682	2.82	2.19	466	1.91	1.50	7,148	2.73	2.13
(EE) ESTONIA					72	0.03	0.02	8	0.03	0.03	80	0.03	0.02
(ES) SPAIN					19,890	8.38	6.53	1,929	7.92	6.19	21,819	8.34	6.50
(FI) FINLAND					2,488	1.05	0.82	213	0.87	0.68	2,701	1.03	0.80
(FR) FRANCE					25,476	10.73	8.37	2,827	11.61	9.08	28,303	10.82	8.43
(GB) UNITED KINGDOM					22,143	9.33	7.27	1,863	7.65	5.98	24,006	9.17	7.15
(GR) GREECE					168	0.07	0.06	47	0.19	0.15	215	0.08	0.06
(HU) HUNGARY					586	0.25	0.19	35	0.14	0.11	621	0.24	0.19
(IE) IRELAND					1,471	0.62	0.48	89	0.37	0.29	1,560	0.60	0.46
(IT) ITALY					45,882	19.33	15.07	4,545	18.66	14.59	50,427	19.27	15.02
(LT) LITHUANIA					70	0.03	0.02	10	0.04	0.03	80	0.03	0.02
(LU) LUXEMBOURG					932	0.39	0.31	58	0.24	0.19	990	0.38	0.29
(LV) LATVIA					151	0.06	0.05	48	0.20	0.15	199	0.08	0.06
(MT) MALTA					31	0.01	0.01	10	0.04	0.03	41	0.02	0.01
(NL) NETHERLANDS					10,311	4.34	3.39	1,003	4.12	3.22	11,314	4.32	3.37
(PL) POLAND					4,031	1.70	1.32	616	2.53	1.98	4,647	1.78	1.38
(PT) PORTUGAL					2,141	0.90	0.70	374	1.54	1.20	2,515	0.96	0.75
(RO) ROMANIA					100	0.04	0.03	6	0.02	0.02	106	0.04	0.03
(SE) SWEDEN					5,876	2.48	1.93	666	2.73	2.14	6,542	2.50	1.95
(SI) SLOVENIA					313	0.13	0.10	36	0.15	0.12	349	0.13	0.10
(SK) SLOVAKIA					355	0.15	0.12	32	0.13	0.10	387	0.15	0.12
Σ					237,318	100.00	77.93	24,352	100.00	78.18	261,670	100.00	77.96

Otros estados - Andere staaten - Other states - Autres etats - Altri stati

Origen Herkunft Origin Origine Origine	2003 - 2007	% UE EU UE UE	% Mundo Welt World Monde Mondo	2008	% UE EU UE UE	% Mundo Welt World Monde Mondo	Total Ingesamt Total Total Totale	% UE EU UE UE	% Mundo Welt World Monde Mondo
(AD) ANDORRA	9	0.01	0.00				9	0.01	0.00
(AE) UNITED ARAB EMIRATES	94	0.14	0.03				94	0.13	0.03
(AG) ANTIGUA AND BARBUDA	4	0.01	0.00				4	0.01	0.00
(AI) ANGUILLA	2	0.00	0.00				2	0.00	0.00
(AN) NETHERLANDS ANTILLES	146	0.22	0.05				146	0.20	0.04
(AR) ARGENTINA	32	0.05	0.01	1	0.01	0.00	33	0.04	0.01
(AU) AUSTRALIA	1,297	1.93	0.43	123	1.81	0.39	1,420	1.92	0.42
(BA) BOSNIA AND HERZEGOVINA	56	0.08	0.02				56	0.08	0.02
(BB) BARBADOS	58	0.09	0.02	12	0.18	0.04	70	0.09	0.02
(BM) BERMUDA	84	0.13	0.03				84	0.11	0.03
(BR) BRAZIL	315	0.47	0.10	70	1.03	0.22	385	0.52	0.11
(BS) BAHAMAS	76	0.11	0.02				76	0.10	0.02
(BY) BELARUS	9	0.01	0.00				9	0.01	0.00
(CA) CANADA	1,025	1.53	0.34	131	1.93	0.42	1,156	1.56	0.34
(CF) CENTRAL AFRICAN REPUBLIC	1	0.00	0.00				1	0.00	0.00
(CH) SWITZERLAND	8,724	12.98	2.86	1,008	14.83	3.24	9,732	13.15	2.90
(CI) IVORY COAST	2	0.00	0.00				2	0.00	0.00
(CK) COOK, ISLANDS	5	0.01	0.00				5	0.01	0.00
(CL) CHILE	1	0.00	0.00	1	0.01	0.00	2	0.00	0.00
(CN) CHINA (THE PEOPLE'S REPUBLIC OF)	1,834	2.73	0.60	400	5.89	1.28	2,234	3.02	0.67
(CO) COLOMBIA	8	0.01	0.00				8	0.01	0.00
(CR) COSTA RICA	15	0.02	0.00				15	0.02	0.00
(CU) CUBA	53	0.08	0.02				53	0.07	0.02
(DO) DOMINICAN REPUBLIC				29	0.43	0.09	29	0.04	0.01
(EG) EGYPT	12	0.02	0.00				12	0.02	0.00
(FO) FAEROE, ISLANDS	13	0.02	0.00				13	0.02	0.00
(GA) GABON	1	0.00	0.00				1	0.00	0.00
(GI) GIBRALTAR	33	0.05	0.01	58	0.85	0.19	91	0.12	0.03
(GL) GREENLAND	9	0.01	0.00				9	0.01	0.00
(HK) THE HONG KONG SPECIAL ADMINISTRATIVE REGION OF THE PEOP	3,889	5.79	1.28	319	4.69	1.02	4,208	5.69	1.25
(HN) HONDURAS	1	0.00	0.00				1	0.00	0.00
(HR) CROATIA	99	0.15	0.03	12	0.18	0.04	111	0.15	0.03
(IC) BRITISH CHANNEL ISLANDS (JERSEY & GUERNSEY)	591	0.88	0.19				591	0.80	0.18
(ID) INDONESIA	27	0.04	0.01	8	0.12	0.03	35	0.05	0.01
(IL) ISRAEL	624	0.93	0.20	45	0.66	0.14	669	0.90	0.20
(IM) ISLE OF MAN	8	0.01	0.00				8	0.01	0.00
(IN) INDIA	209	0.31	0.07	28	0.41	0.09	237	0.32	0.07
(IR) IRAN (ISLAMIC REPUBLIC OF)	7	0.01	0.00				7	0.01	0.00
(IS) ICELAND	31	0.05	0.01	4	0.06	0.01	35	0.05	0.01
(JP) JAPAN	10,263	15.27	3.37	834	12.27	2.68	11,097	15.00	3.31
(KN) SAINT KITTS AND NEVIS	3	0.00	0.00				3	0.00	0.00

Origen	Herkunft	Origin	Origine	Origine	2003 - 2007	% UE EU UE UE	% Mundo Welt World Monde Mondo	2008	% UE EU UE UE	% Mundo Welt World Monde Mondo	Total Ingesamt Total Total Totale	% UE EU UE UE	% Mundo Welt World Monde Mondo
(KP)	NORTH KOREA (DEMOCRATIC PEOPLE'S REPUBLIC OF)				1	0.00	0.00				1	0.00	0.00
(KR)	REPUBLIC OF KOREA				2,887	4.30	0.95	348	5.12	1.12	3,235	4.37	0.96
(KY)	CAYMAN ISLANDS				61	0.09	0.02				61	0.08	0.02
(LB)	LEBANON				17	0.03	0.01				17	0.02	0.01
(LI)	LIECHTENSTEIN				786	1.17	0.26	179	2.63	0.57	965	1.30	0.29
(LK)	SRI LANKA (CEYLON)				2	0.00	0.00				2	0.00	0.00
(MA)	MOROCCO				3	0.00	0.00				3	0.00	0.00
(MC)	MONACO				58	0.09	0.02	10	0.15	0.03	68	0.09	0.02
(MD)	REPUBLIC OF MOLDOVA				6	0.01	0.00	1	0.01	0.00	7	0.01	0.00
(MG)	MADAGASCAR				1	0.00	0.00				1	0.00	0.00
(MO)	THE MACAO SPECIAL ADMINISTRATIVE REGION OF THE PEOPLE'S				1	0.00	0.00				1	0.00	0.00
(MU)	MAURITIUS				14	0.02	0.00				14	0.02	0.00
(MX)	MEXICO				30	0.04	0.01				30	0.04	0.01
(MY)	MALAYSIA				141	0.21	0.05	13	0.19	0.04	154	0.21	0.05
(NC)	NEW CALEDONIA				2	0.00	0.00				2	0.00	0.00
(NO)	NORWAY				1,019	1.52	0.33	60	0.88	0.19	1,079	1.46	0.32
(NZ)	NEW ZEALAND				395	0.59	0.13	39	0.57	0.13	434	0.59	0.13
(PA)	PANAMA				19	0.03	0.01	26	0.38	0.08	45	0.06	0.01
(PE)	PERU				5	0.01	0.00				5	0.01	0.00
(PF)	FRENCH POLYNESIA				1	0.00	0.00				1	0.00	0.00
(PH)	PHILIPPINES				3	0.00	0.00				3	0.00	0.00
(PK)	PAKISTAN				24	0.04	0.01	2	0.03	0.01	26	0.04	0.01
(RE)	REUNION							1	0.01	0.00	1	0.00	0.00
(RS)	SERBIA				1	0.00	0.00				1	0.00	0.00
(RU)	RUSSIAN FEDERATION				86	0.13	0.03	5	0.07	0.02	91	0.12	0.03
(SC)	SEYCHELLES				8	0.01	0.00	1	0.01	0.00	9	0.01	0.00
(SG)	SINGAPORE				237	0.35	0.08	12	0.18	0.04	249	0.34	0.07
(SM)	SAN MARINO				77	0.11	0.03	6	0.09	0.02	83	0.11	0.02
(SY)	SYRIA				6	0.01	0.00				6	0.01	0.00
(SZ)	SWAZILAND							1	0.01	0.00	1	0.00	0.00
(TC)	TURKS AND CAICOS ISLANDS				1	0.00	0.00				1	0.00	0.00
(TH)	THAILAND				226	0.34	0.07	6	0.09	0.02	232	0.31	0.07
(TN)	TUNISIA				28	0.04	0.01	4	0.06	0.01	32	0.04	0.01
(TR)	TURKEY				1,092	1.63	0.36	142	2.09	0.46	1,234	1.67	0.37
(TT)	TRINIDAD AND TOBAGO				2	0.00	0.00				2	0.00	0.00
(TW)	TAIWAN				2,624	3.91	0.86	237	3.49	0.76	2,861	3.87	0.85
(UA)	UKRAINE				9	0.01	0.00	8	0.12	0.03	17	0.02	0.01
(US)	UNITED STATES OF AMERICA				26,861	39.98	8.82	2,542	37.41	8.16	29,403	39.74	8.76
(UY)	URUGUAY				2	0.00	0.00				2	0.00	0.00
(VE)	VENEZUELA				2	0.00	0.00	3	0.04	0.01	5	0.01	0.00
(VG)	VIRGIN ISLANDS OF GREAT BRITAIN				535	0.80	0.18	54	0.79	0.17	589	0.80	0.18
(VN)	VIETNAM (SOCIALIST REPUBLIC OF)				19	0.03	0.01				19	0.03	0.01
(VU)	VANUATU (NEW HEBRIDES)				7	0.01	0.00				7	0.01	0.00

Origen	Herkunft	Origin	Origine	Origine	2003 - 2007	% UE EU UE UE	% Mundo Welt World Monde Mondo	2008	% UE EU UE UE	% Mundo Welt World Monde Mondo	Total Ingesamt Total Total Totale	% UE EU UE UE	% Mundo Welt World Monde Mondo
(WS) WESTERN SAMOA					6	0.01	0.00				6	0.01	0.00
(XX) COUNTRYLESS					16	0.02	0.01				16	0.02	0.00
(YU) SERBIA AND MONTENEGRO (USE CODES 'RS' OR 'ME' INSTEAD)					5	0.01	0.00				5	0.01	0.00
(ZA) SOUTH AFRICA					198	0.29	0.07	12	0.18	0.04	210	0.28	0.06
				Σ	67,194	100.00	22.07	6,795	100.00	21.82	73,989	100.00	22.04



SSC007 - Statistics of Community Designs 2008

Hasta / Bis / Until / Jusqu'à / Fino : 31/05/2008

Nacionalidad del solicitante - Staatsangehörigkeit des anmelders - Nationality of owner
 Nationalité des déposants - Nazionalità del richiedente

04/06/2008

TOP 25

	Estados - Staaten - States - Etats - Stati	2003 - 2007	2008	Total Insgesamt Total Total Totale	%
1	DE	72,919	8,033	80,952	24.12
2	IT	45,882	4,545	50,427	15.02
3	US	26,861	2,542	29,403	8.76
4	FR	25,476	2,827	28,303	8.43
5	GB	22,143	1,863	24,006	7.15
6	ES	19,890	1,929	21,819	6.50
7	NL	10,311	1,003	11,314	3.37
8	JP	10,263	834	11,097	3.31
9	CH	8,724	1,008	9,732	2.90
10	AT	7,641	745	8,386	2.50
11	DK	6,682	466	7,148	2.13
12	SE	5,876	666	6,542	1.95
13	BE	5,563	441	6,004	1.79
14	PL	4,031	616	4,647	1.38
15	HK	3,889	319	4,208	1.25
16	KR	2,887	348	3,235	0.96
17	TW	2,624	237	2,861	0.85
18	FI	2,488	213	2,701	0.80
19	PT	2,141	374	2,515	0.75
20	CN	1,834	400	2,234	0.67
21	CZ	1,745	209	1,954	0.58
22	IE	1,471	89	1,560	0.46
23	AU	1,297	123	1,420	0.42
24	TR	1,092	142	1,234	0.37
25	CA	1,025	131	1,156	0.34
	Σ (25)	294,755	30,103	324,858	96.78
	Σ (25+)	9,757	1,044	10,801	3.22
	Σ	304,512	31,147	335,659	

	Estados - Staaten - States - Etats - Stati	2008 01	2008 02	2008 03	2008 04	2008 05	Total Insgesamt Total Total Totale	%
1	DE	1,545	2,388	1,465	2,289	346	8,033	25.79
2	IT	783	1,067	846	1,401	448	4,545	14.59
3	FR	956	680	482	614	95	2,827	9.08
4	US	564	632	567	463	316	2,542	8.16
5	ES	559	480	387	272	231	1,929	6.19
6	GB	450	375	393	431	214	1,863	5.98
7	CH	142	222	405	218	21	1,008	3.24
8	NL	211	181	158	351	102	1,003	3.22
9	JP	180	203	233	162	56	834	2.68
10	AT	72	141	250	248	34	745	2.39
11	SE	140	145	124	157	100	666	2.14
12	PL	111	173	125	180	27	616	1.98
13	DK	108	134	56	128	40	466	1.50
14	BE	65	174	61	123	18	441	1.42
15	CN	88	24	139	125	24	400	1.28
16	PT	119	80	30	69	76	374	1.20
17	KR	96	50	103	66	33	348	1.12
18	HK	64	106	106	36	7	319	1.02
19	TW	63	49	58	51	16	237	0.76
20	FI	46	15	53	89	10	213	0.68
21	CZ	78	64	27	36	4	209	0.67
22	LI		92	27	13	47	179	0.57
23	TR	72	5	16	29	20	142	0.46
24	CA	38	20	18	6	49	131	0.42
25	AU	21	28	22	33	19	123	0.39
	Σ (25)	6,571	7,528	6,151	7,590	2,353	30,193	9.00
	Σ (25+)	254	201	173	250	76	954	91.00
	Σ	6,825	7,729	6,324	7,840	2,429	31,147	



SSC007 - Statistics of Community Designs 2008

Hasta / Bis / Until / Jusqu'à / Fino : 31/05/2008

Nacionalidad del Representante - Staatsangehörigkeit des Vertreters - Nationality of representative
 Nationalité des représentants - Nazionalità del rappresentante

04/06/2008

	Estados - Staaten - States - Etats - Stati	2003 - 2007	2008	Total Insgesamt Total Total Totale	%		Estados - Staaten - States - Etats - Stati	2008	2008	2008	2008	2008	Total Insgesamt Total Total Totale	%	
								01	02	03	04	05			
1	DE	83,699	9,567	93,266	27.79	1	DE	1,681	2,577	2,162	2,607	540	9,567	30.72	
2	GB	45,621	3,953	49,574	14.77	2	IT	796	991	767	1,476	442	4,472	14.36	
3	IT	44,557	4,472	49,029	14.61	3	GB	921	938	787	825	482	3,953	12.69	
4	XX	33,581	3,605	37,186	11.08	4	XX	813	906	832	764	290	3,605	11.57	
5	ES	25,767	2,376	28,143	8.38	5	FR	991	545	397	646	121	2,700	8.67	
6	FR	24,757	2,700	27,457	8.18	6	ES	646	512	583	449	186	2,376	7.63	
7	NL	9,050	864	9,914	2.95	7	NL	203	248	131	201	81	864	2.77	
8	SE	6,331	649	6,980	2.08	8	SE	134	140	114	170	91	649	2.08	
9	BE	6,349	451	6,800	2.03	9	AT	49	167	177	123	61	577	1.85	
10	DK	6,299	426	6,725	2.00	10	PL	79	157	114	156	22	528	1.70	
11	AT	5,693	577	6,270	1.87	11	BE	89	137	69	121	35	451	1.45	
12	PL	3,337	528	3,865	1.15	12	DK	105	128	43	114	36	426	1.37	
13	FI	2,283	209	2,492	0.74	13	FI	48	21	49	80	11	209	0.67	
14	IE	1,917	183	2,100	0.63	14	IE	129	15	13	24	2	183	0.59	
15	CZ	1,487	175	1,662	0.50	15	CZ	74	55	20	22	4	175	0.56	
16	LU	1,260	133	1,393	0.42	16	LU	19	92	9	6	7	133	0.43	
17	PT	868	93	961	0.29	17	PT	20	50	6	6	11	93	0.30	
18	HU	421	23	444	0.13	18	BG	5	22	3	16		46	0.15	
19	SK	355	40	395	0.12	19	SK	5	10	6	19		40	0.13	
20	SI	249	21	270	0.08	20	GR	7	6	13	1		27	0.09	
21	GR	157	27	184	0.05	21	HU	5	6	8	4		23	0.07	
22	BG	131	46	177	0.05	22	SI	3	3	12	3		21	0.07	
23	LT	132	17	149	0.04	23	LT	2		2	6	7	17	0.05	
24	LV	106	3	109	0.03	24	EE		1	5			6	0.02	
25	EE	53	6	59	0.02	25	LV	1	1	1			3	0.01	
26	RO	38	2	40	0.01	26	RO		1	1			2	0.01	
27	CY	8		8	0.00	27	MT				1		1	0.00	
28	GI	6		6	0.00										
29	MT		1	1	0.00										
	Σ	304,512	31,147	335,659			Σ	6,825	7,729	6,324	7,840	2,429	31,147		



SSC007 - Statistics of Community Designs 2008

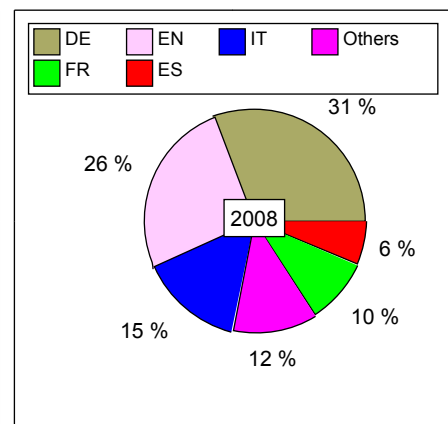
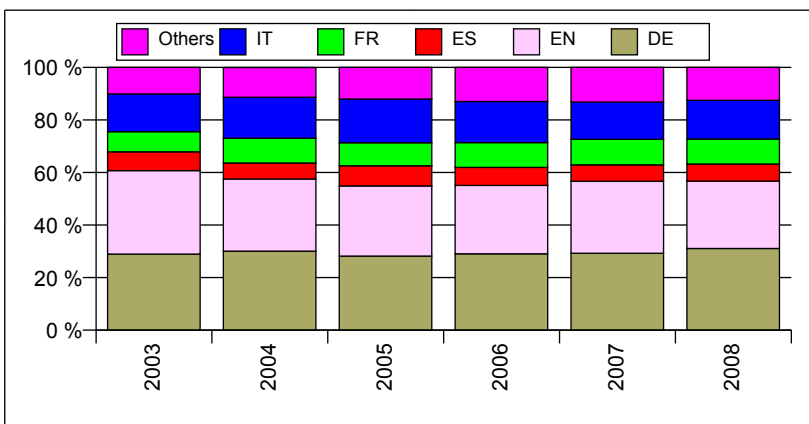
Hasta / Bis / Until / Jusqu'à / Fino : 31/05/2008

Primera lengua - Erste Sprache - First language

Première langue - Prima lingua

04/06/2008

Primera lengua - Erste Sprache - First Language - Première langue - Prima lingua	2003 - 2007	%	2008	%	Total - Ingesamt - Total - Totale	%
BG	135	0.04	46	0.15	181	0.05
CS	1,527	0.50	177	0.57	1,704	0.51
DA	6,465	2.12	426	1.37	6,891	2.05
DE	88,609	29.10	9,689	31.11	98,298	29.29
EL	130	0.04	30	0.10	160	0.05
EN	83,862	27.54	7,985	25.64	91,847	27.36
ES	20,627	6.77	2,022	6.49	22,649	6.75
ET	62	0.02	7	0.02	69	0.02
FI	2,368	0.78	216	0.69	2,584	0.77
FR	27,861	9.15	2,969	9.53	30,830	9.18
HU	476	0.16	30	0.10	506	0.15
IT	46,549	15.29	4,589	14.73	51,138	15.24
LT	93	0.03	17	0.05	110	0.03
LV	138	0.05	45	0.14	183	0.05
NL	12,907	4.24	1,224	3.93	14,131	4.21
PL	3,830	1.26	606	1.95	4,436	1.32
PT	1,986	0.65	309	0.99	2,295	0.68
RO	31	0.01	2	0.01	33	0.01
SK	366	0.12	30	0.10	396	0.12
SL	250	0.08	30	0.10	280	0.08
SV	6,239	2.05	698	2.24	6,937	2.07
Irregularidad [No definida] Fehler [nicht angegeben] Deficiency [not defined] Irregularité [non défini] Irregolarità [non definita]	1	0.00			1	0.00
Σ	304,512	100.00	31,147	100.00	335,659	100.00





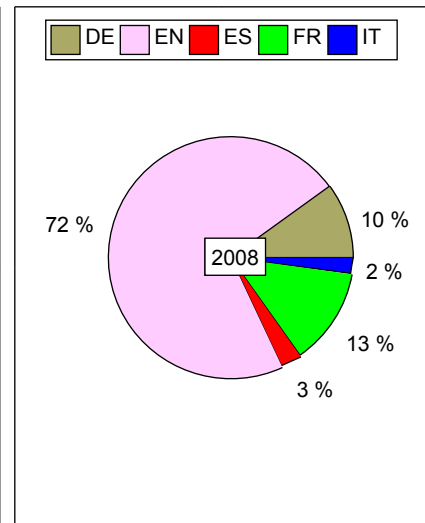
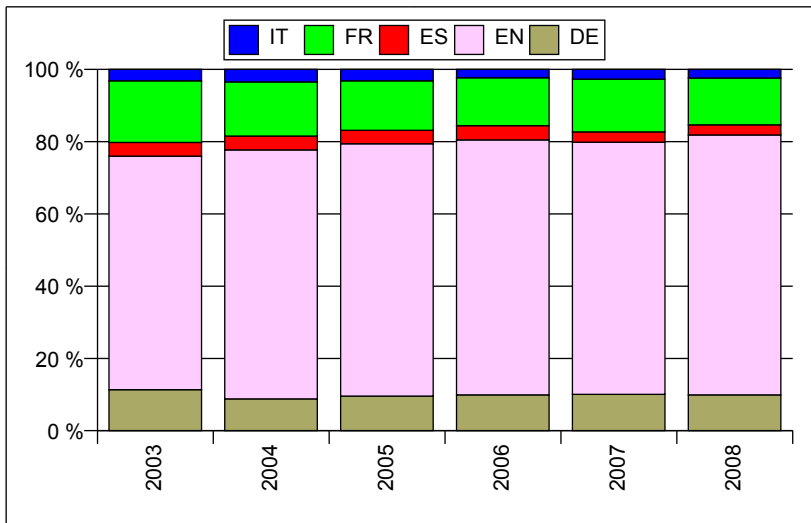
SSC007 - Statistics of Community Designs 2008

Hasta / Bis / Until / Jusqu'à / Fino : 31/05/2008

Segunda lingua - Zweite Sprache - Second language
Deuxième langue - Seconda lingua

04/06/2008

Segunda lingua - Zweite Sprache - Second Language - Deuxième langue - Seconda lingua	2003 - 2007	%	2008	%	Total - Insgesamt - Total - Total - Totale	%
EN	210,571	69.15	22,403	71.93	232,974	69.41
FR	44,142	14.50	4,029	12.94	48,171	14.35
DE	30,071	9.88	3,090	9.92	33,161	9.88
ES	10,889	3.58	880	2.83	11,769	3.51
IT	8,839	2.90	745	2.39	9,584	2.86
Σ	304,512	100.00	31,147	100.00	335,659	100.00





SSC007 - Statistics of Community Designs 2008

Hasta / Bis / Until / Jusqu'à / Fino : 31/05/2008

Desglose por clase - Aufschlüsselung nach Klassen - Breakdown by class

Ventilation par classe - Ripartizione per classe

04/06/2008

	Class - Klasse - Class - Classe - Classe	2003 - 2007	2008	Total Insgesamt Total Totale	%
1	06	39,654	4,017	43,671	12.54
2	02	26,844	3,175	30,019	8.62
3	09	23,390	1,996	25,386	7.29
4	23	19,606	2,356	21,962	6.31
5	14	18,022	2,205	20,227	5.81
6	26	18,211	1,740	19,951	5.73
7	07	17,616	1,829	19,445	5.58
8	99	15,367	1,254	16,621	4.77
9	25	14,386	1,597	15,983	4.59
10	08	14,048	1,531	15,579	4.47
11	11	13,744	1,431	15,175	4.36
12	12	13,825	1,215	15,040	4.32
13	21	11,529	1,098	12,627	3.63
14	10	9,066	913	9,979	2.87
15	19	8,449	719	9,168	2.63
16	03	6,892	658	7,550	2.17
17	15	6,529	737	7,266	2.09
18	13	5,623	740	6,363	1.83
19	24	5,682	479	6,161	1.77
20	05	5,422	472	5,894	1.69
21	20	4,956	272	5,228	1.50
22	16	3,998	346	4,344	1.25
23	28	3,574	306	3,880	1.11
24	01	1,848	157	2,005	0.58
25	04	1,558	164	1,722	0.49
26	30	1,472	89	1,561	0.45
27	18	1,314	183	1,497	0.43
28	27	1,083	40	1,123	0.32
29	31	935	55	990	0.28
30	22	731	76	807	0.23
31	29	519	50	569	0.16
32	17	363	41	404	0.12
	Σ	316,256	31,941	348,197	

	Class - Klasse - Class - Classe - Classe	2008 01	2008 02	2008 03	2008 04	2008 05	Total Insgesamt Total Totale	%
1	06	919	809	703	1,240	346	4,017	12.58
2	02	859	612	772	711	221	3,175	9.94
3	23	382	666	497	615	196	2,356	7.38
4	14	315	711	577	455	147	2,205	6.90
5	09	431	431	342	646	146	1,996	6.25
6	07	404	670	347	321	87	1,829	5.73
7	26	279	305	395	682	79	1,740	5.45
8	25	345	435	209	433	175	1,597	5.00
9	08	353	436	264	393	85	1,531	4.79
10	11	462	418	180	216	155	1,431	4.48
11	99	258	334	266	261	135	1,254	3.93
12	12	235	299	250	284	147	1,215	3.80
13	21	381	326	187	149	55	1,098	3.44
14	10	145	222	219	286	41	913	2.86
15	13	167	160	123	236	54	740	2.32
16	15	100	139	236	240	22	737	2.31
17	19	166	131	247	125	50	719	2.25
18	03	204	142	154	112	46	658	2.06
19	24	86	119	71	129	74	479	1.50
20	05	194	59	98	91	30	472	1.48
21	20	68	77	85	94	22	346	1.08
22	16	39	115	78	46	28	306	0.96
23	28	48	60	44	45	75	272	0.85
24	18	12	138	21	12		183	0.57
25	04	18	102	14	19	11	164	0.51
26	01	27	34	10	58	28	157	0.49
27	30	13	7	26	33	10	89	0.28
28	22	18	6	24	25	3	76	0.24
29	31	12	16	10	16	1	55	0.17
30	29	16	7	9	16	2	50	0.16
31	17	10	4	16	10	1	41	0.13
32	27	9	14	5	5	7	40	0.13
	Σ	6,975	8,004	6,479	8,004	2,479	31,941	



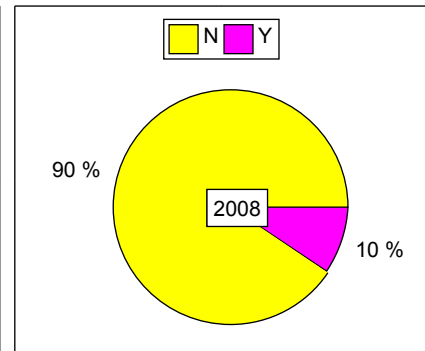
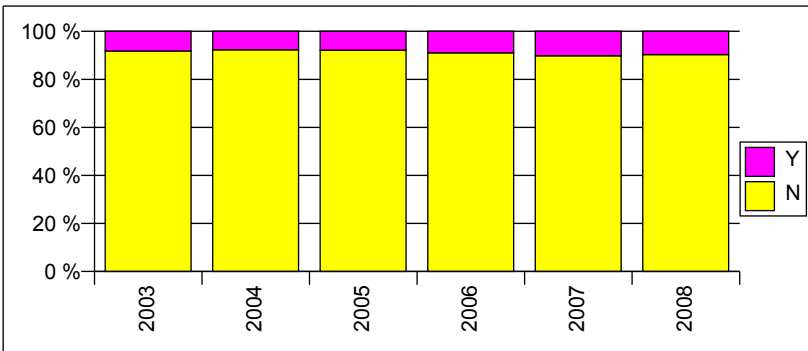
SSC007 - Statistics of Community Designs 2008

Hasta / Bis / Until / Jusqu'à / Fino : 31/05/2008

Publicación aplazada - Deferred publication - Aufgeschobene Bekanntmachung
Ajournement de publication - Pubblicazione differita

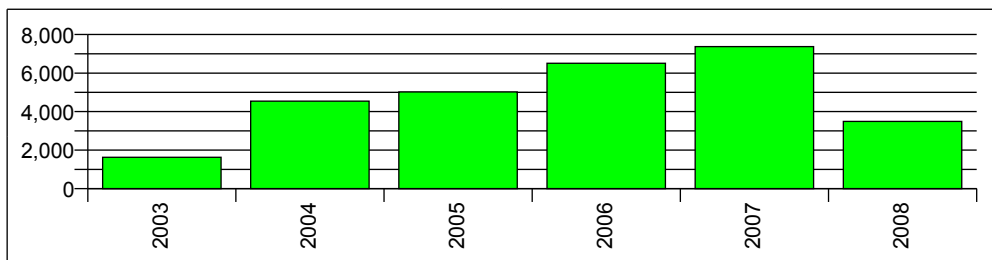
04/06/2008

Publicación aplazada - Deferred publication - Aufgeschobene Bekanntmachung - Ajournement de publication - Pubblicazione differita	2003 - 2007	%	2008	%	Total - Insgesamt - Total - Total - Totale	%
N	277,965	91.28	28,127	90.30	306,092	91.19
Y	26,547	8.72	3,020	9.70	29,567	8.81
Σ	304,512	100.00	31,147	100.00	335,659	100.00



La Parte A.2. contiene los registros de dibujos y modelos comunitarios con petición de aplazamiento y su primera publicación, según el artículo 50 del RDC y el artículo 14, apartado 3 del CDIR. / Part A.2. relates to registrations of Community designs with request for deferment and their first publication according to Article 50 CDR and Article 14(3) CDIR. / Teil A.2. bezieht sich auf Eintragungen von Gemeinschaftsgeschmacksmustern, für die ein Antrag auf Aufschiebung der Bekanntmachung gestellt wurde, und deren erste Bekanntmachung gemäß Artikel 50 GGV und Artikel 14 Absatz 3 GGDV. / La partie A.2. concerne les enregistrements des dessins ou modèles communautaires comprenant une demande d'ajournement et leur première publication conformément à l'article 50 du RDC et à l'article 14, paragraphe 3, du REDC. / La parte A.2 si riferisce alle registrazioni dei disegni o modelli comunitari con richiesta di differimento e prima pubblicazione, ai sensi degli articoli 50 RDC e 14, paragrafo 3, REDC.

A2	RCDs
2003	1,631
2004	4,542
2005	5,019
2006	6,512
2007	7,376
2008	3,494
Σ	28,574



La Parte A.1. se refiere a los registros de dibujos y modelos comunitarios según lo dispuesto en los artículos 48 y 50 del RDC. / Part A.1. concerns Registrations of Community designs according to Articles 48 and 50 CDR. / Teil A.1. betrifft Eintragungen von Gemeinschaftsgeschmacksmustern gemäß Artikel 48 und 50 GGV. / La partie A.1. concerne les enregistrements des dessins ou modèles communautaires conformément aux articles 48 et 50 du RDC. / La parte A.1 riguarda le registrazioni dei disegni o modelli comunitari ai sensi degli articoli 48 e 50 RDC.

A2 --> A1	RCDs
2003	85
2004	554
2005	3,196
2006	3,273
2007	4,490
2008	2,834
Σ	14,432

